

MATLAB[®] Builder for Excel Release Notes

These Release Notes summarize the changes introduced in the latest version of MATLAB Builder for Excel.

Printing the Release Notes

If you would like to print the Release Notes, you can link to a PDF version.



MATLAB Builder for Excel 1.2.3 Release Notes

1

Bugs Fixed in This Release 1-2

Known Software and Documentation Problems 1-3

MATLAB Builder for Excel 1.2.2 Release Notes

2

Bugs Fixed in This Release 2-2

MATLAB Builder for Excel 1.2.1 Release Notes

3

Known Software and Documentation Problems 3-2

MATLAB Builder for Excel 1.2 Release Notes

4

New Features 4-2

 Product Name Change 4-2

 Changes to Screens 4-2

MATLAB Builder for Excel 1.1 Release Notes

5

Introduction to MATLAB Builder for Excel	5-2
Upgrading from an Earlier Release	5-3
Function Wizard	5-3
Upgrading from Release 12.1 to Release 14	5-3
Correction to MATLAB Builder for Excel User's Guide (Printed Version)	5-3

MATLAB Builder for Excel 1.2.3 Release Notes

Bugs Fixed in This Release	1-2
Known Software and Documentation Problems	1-3

Bugs Fixed in This Release

- A MATLAB Builder for Excel component fails to correctly pass an output variable containing a structure within a structure to the client code.
- A MATLAB Builder for Excel component returns a complex output variable as an empty variant to the client application.

Known Software and Documentation Problems

The following software and documentation problems are known to exist in MATLAB Builder for Excel Release 1.2.3.

- When a MATLAB Builder for Excel-generated packaged component is deployed to a machine that does not have MATLAB installed, users receive the following error message when MCRInstaller is installed with the package:

```
LoadLibrary (<Component name>) failed - The specified module could not be found
```

As a workaround, register the COM component manually using the regsvr32 utility. To do this enter

```
regsvr32 <componentname>.dll
```

at the Windows Command Prompt.

Verify that the current working directory is the one that contains the MATLAB Builder for Excel-generated component

MATLAB Builder for Excel 1.2.2 Release Notes

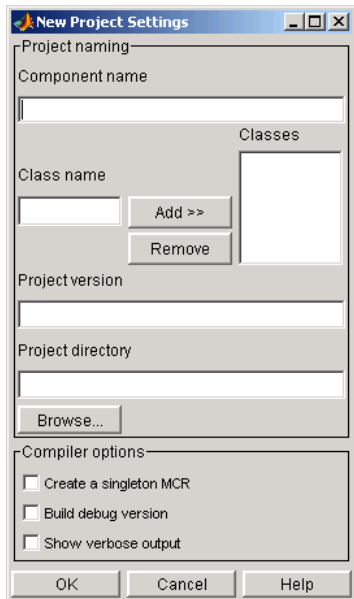
Bugs Fixed in This Release 2-2

Bugs Fixed in This Release

The following software problem that was noticed in Release 1.2.1 has been fixed in MATLAB Builder for Excel Release 1.2.2.

- MATLAB figure windows hang when brought up through a MATLAB Builder for Excel-created component. You have to use the task manager to dismiss the window.

This bug has been fixed via a change on the **New Project Settings** menu. On the **New Project Settings** menu, the **Create a singleton MCR** option tells the MATLAB Compiler to generate code such that it creates only one instance of the MCR per application.



That is, if a user selects this option while creating the component and uses this component in a Visual Basic application, every instance of the component does not result in the creation of a new MCR. Instead, each instance uses the same MCR.

Note For MATLAB Builder for Excel, this option is always on whether or not you select the check box.

MATLAB Builder for Excel

1.2.1 Release Notes

Known Software and Documentation Problems 3-2

Known Software and Documentation Problems

The following software and documentation problems are known to exist in MATLAB Builder for Excel Release 1.2.1.

When a MATLAB Builder for Excel-generated packaged component is deployed to a machine that does not have MATLAB installed, users receive the following error message when MCRInstaller is installed with the package:

```
LoadLibrary (<Component name>) failed - The specified module could  
not be found
```

As a workaround, register the component manually using the regsvr32 utility. To do this enter

```
regsvr32 <componentname>.dll
```

at the Windows Command Prompt.

Verify that the current working directory is the one that contains the MATLAB Builder for Excel-generated component

MATLAB Builder for Excel 1.2 Release Notes

New Features	4-2
Product Name Change	4-2
Changes to Screens	4-2

New Features

Product Name Change

This product was previously named MATLAB Excel Builder.

Changes to Screens

Various screens within this product have been changed for consistency with similar products. The functionality is unchanged from previous releases.

MATLAB Builder for Excel

1.1 Release Notes

Introduction to MATLAB Builder for Excel	5-2
Upgrading from an Earlier Release	5-3
Function Wizard	5-3
Upgrading from Release 12.1 to Release 14	5-3
Correction to MATLAB Builder for Excel User's Guide (Printed Version)	5-3

Introduction to MATLAB Builder for Excel

Note The MATLAB Builder for Excel 1.1 is the first release of this product as part of a major MathWorks release CD. MATLAB Builder for Excel 1.0 was initially released in Web-downloadable form after Release 12.1 was released, but before Release 13.

MATLAB Builder for Excel provides the capability to incorporate seamlessly and quickly MATLAB models and functions into Excel worksheets. A graphical user interface enables you to build and deploy Excel Add-In's containing functionality designed in MATLAB but accessed from the Excel environment.

Using MATLAB Builder for Excel to create a deployable application is a simple process requiring a sequence of six steps:

- 1 Creating a Project
- 2 Managing M- and MEX-Files
- 3 Building a Project
- 4 Testing the Model
- 5 Creating an Excel Add-In
- 6 Packaging and Distributing the Component

The *MATLAB Builder for Excel User's Guide* provides complete documentation for this product.

Upgrading from an Earlier Release

Function Wizard

Release 1.1 of the MATLAB Builder for Excel differs from the Web-downloadable version (Release 1.0) by the inclusion of the Function Wizard.

The Function Wizard enables you to pass Microsoft Excel worksheet values to a compiled MATLAB model and to return model output to a cell or range of cells in the worksheet. The Function Wizard provides an intuitive interface to Excel worksheets. Knowledge of Visual Basic for Applications (VBA) programming is not required.

The Function Wizard reflects any changes that you make in the worksheets, such as range selections. Going in the opposite direction, you can use the Function Wizard to control the placement and output of data from MATLAB functions to the worksheets.

Note At this release the Function Wizard is not able to process the sparse, struct, or complex data types.

Upgrading from Release 12.1 to Release 14

If you have used MATLAB Builder for Excel with Release 12.1, you must rebuild and redeploy all components with MATLAB Release 14.

Correction to MATLAB Builder for Excel User's Guide (Printed Version)

Under *Installing the Function Wizard Add-in* on page 5-2, the second sentence in step 2 should say:

Check the item and click **OK**.

